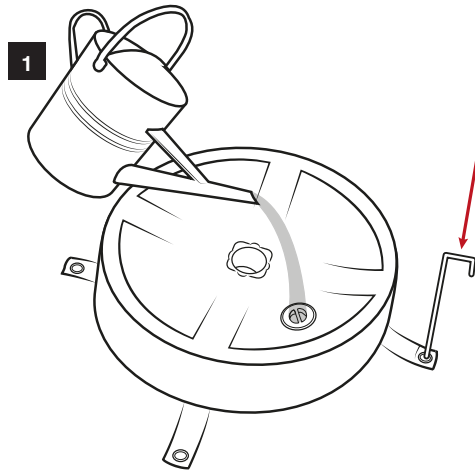
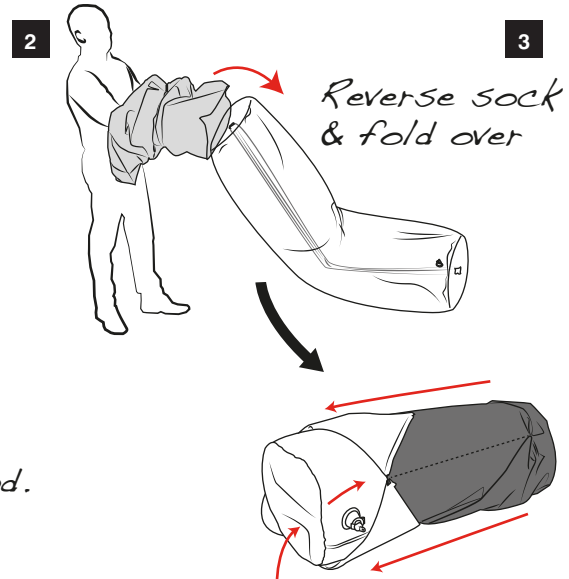


# Outdoor Inflatable Column

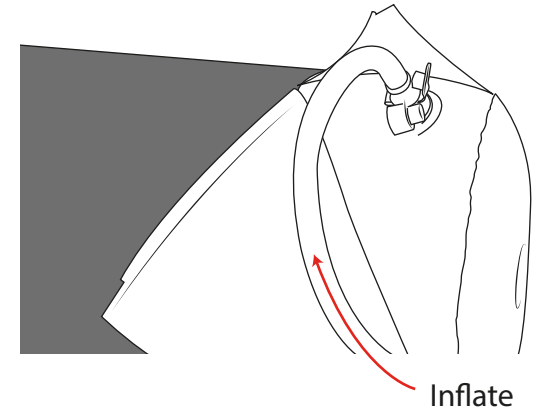
Created 16/03/15



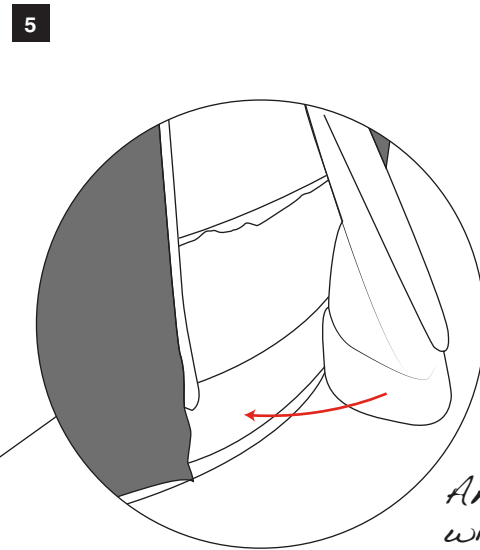
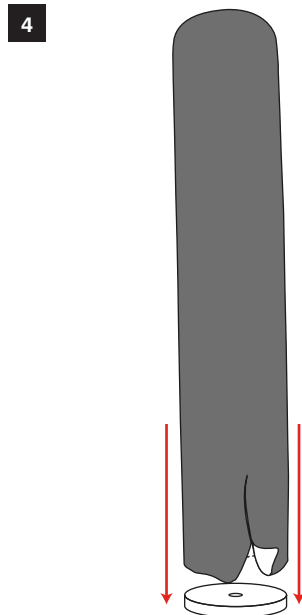
1  
Fill with 13L water or sand.  
Insert pegs into holes.



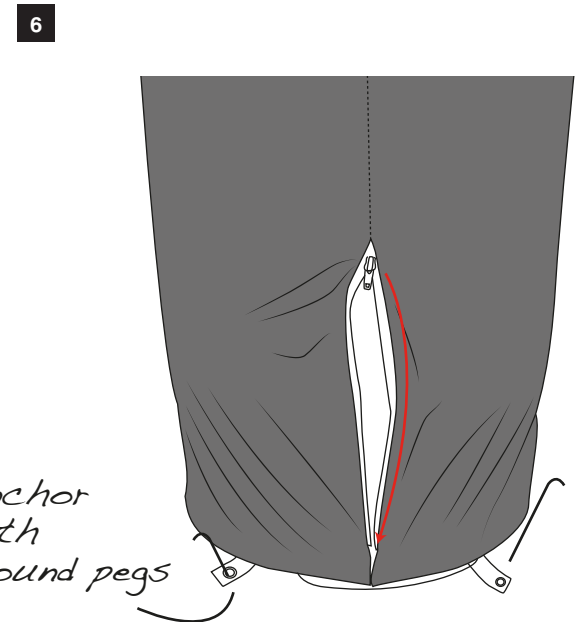
2  
Reverse sock  
& fold over



Inflate



4  
5  
Anchor  
with  
ground pegs



IMPORTANT NOTE: Care should be taken during use of this product because extremes of temperature may cause the inflatable column to be either over or underinflated

Disclaimer: We are continually improving and modifying our product range and reserve the right to vary the specifications without prior notice. All dimensions and weights quoted are approximate

Instructions